

SG 3000

Supports Toric IOL, Multifocal IOL,
Standard IOL, LRI, Corneal Inlay Surgeries

- ✓ Contact & Marker free
- ✓ Reproducible Precision
- ✓ Real time Imaging
- ✓ Multi-Application Platform



Improve your workflow with SMI Surgery Guidance

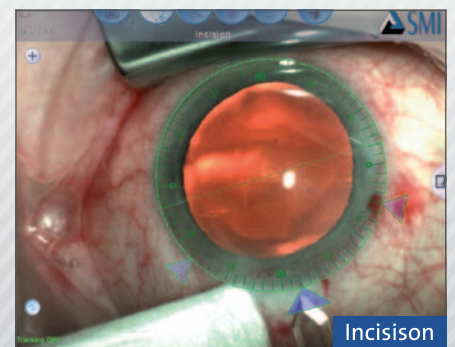
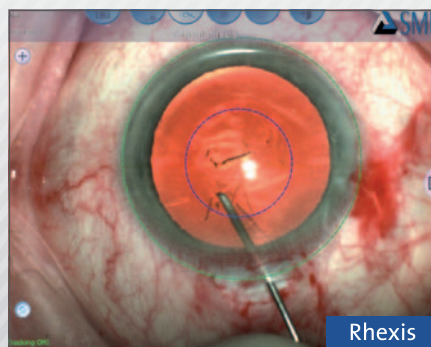
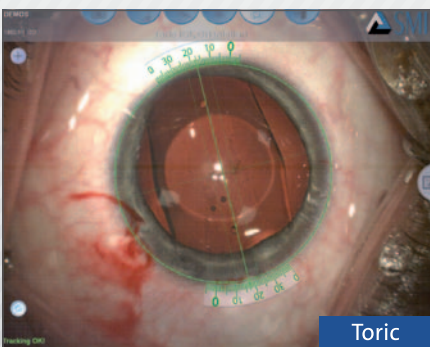
Measure



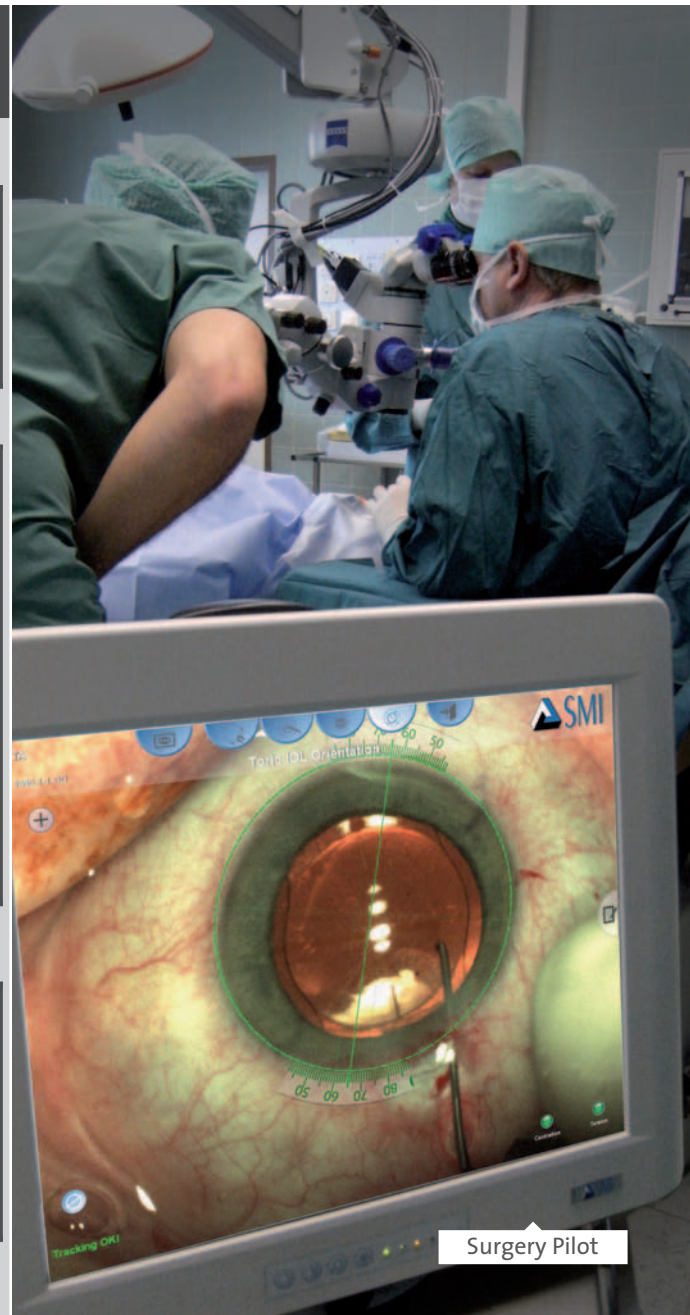
Plan



Treat



Function / Application	Toric IOL	Phakic IOL	LRI	Spheric & Aspheric IOL	Multi-focal IOL
Pre-Surgery Reference					
K-readings	●	●	●	●	●
Line-of-Sight		●			●
White-to-White (Limbus)	○	○	○	○	○
Surgery Pilot					
Patient Confirmation	●	●	●	●	●
Incision Mode	●	●	●	●	●
Capsulorhexis Mode	●			●	●
Toric IOL Alignment	●	●			●
Multifocal IOL Position	●				●
Documentation of Surgery	○	○	○	○	○
Post-Surgery Documentation					
Toric Stability Documentation	○	○			○
Lens Centration	○	○		○	○
Documentation Post Surgery Position	○	○	○	○	○
● = included ○ = coming soon					



Technical Specification

Reference Unit:

- 8" Resistive touch panel PC
- Resolution 800 x 600 pixels
- Reference Unit Software
- USB 2.0 data interface
- Measurement head
- X,Y,Z cross-slide
- Medical power supply
- Chinrest and base plate
- Medical power supply 30W

Surgery Pilot:

- 17" Resistive touch panel PC
- Resolution 1280 x 1024 pixels
- Surgery Pilot software
- Medical power supply 100W
- Table PC stand
- Supported microscopes: Leica, Möller-Wedel Zeiss, other with microscope color camera

Optional:

- Elevation table for Reference Unit
- Mobile PC stand
- Video grabber for third party microscope cameras
- SMI C-Mount Camera Kit